

● Discrete wire soldering

• Follow the procedure below as you make wiring.

<Connected to the front type>

- (1) Remove two screws on the wiring cover.
- (2) Remove the wiring cover.
- (3) Take off the two screws fixing the PCB.
- (4) Remove the PCB carefully so that probe will not come off, and replace the probe.

● Replacing the probes

Pull out worn probes with tweezers. Insert new probes. (The probes used in the BBSP and CCBB series are a double-ended type. The probe tips contact the PCB to form connections. The probes are not soldered and are easily detached.) Reinstall the PCB in the original position.

● Flex wiring by means of a flex connector

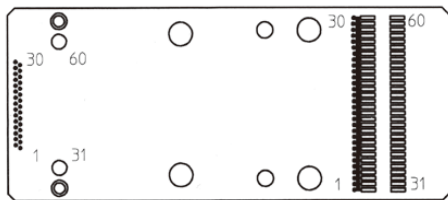
- A 0.4-mm pitch BtoB connector can be used.
- In the same way as for soldering of discrete wires described above, remove the board and, referring to the diagram below, wire to the solder pads that are used depending on pin numbers set.

● FRC connector-fitted wiring

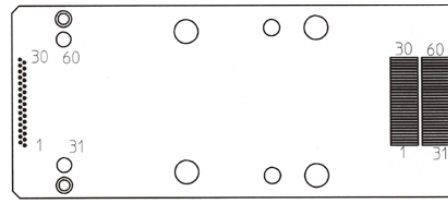
- The FRC connector used here is HIF6-32•40•60PA1.27DS (1.27 pitch), made by Hirose Electric Co.
- Cable for relay-wiring to this product is available. The 1.27-pitch relay flat ribbon cable (FCH series) is the one you can choose for use here.

Discrete wiring type and BtoB (board-to-board) connector wiring type

■ CCBB-040T-pin number



■ CCBB-040T-pin number-BB

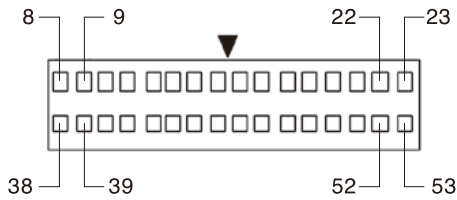


Contact pins	Unused solder pad pins no.& FRC connector pin no.																																																											
10 pins	1 2 3 4 5 6 7 8 9 10 11 12 13	19 20 21 22 23 24 25 26 27 28 29 30	31 32 33 34 35 36 37 38 39 40 41 42 43	49 50 51 52 53 54 55 56 57 58 59 60																																																								
12	1 2 3 4 5 6 7 8 9 10 11 12	19 20 21 22 23 24 25 26 27 28 29 30	31 32 33 34 35 36 37 38 39 40 41 42	49 50 51 52 53 54 55 56 57 58 59 60																																																								
14	1 2 3 4 5 6 7 8 9 10 11 12	20 21 22 23 24 25 26 27 28 29 30	31 32 33 34 35 36 37 38 39 40 41 42	50 51 52 53 54 55 56 57 58 59 60																																																								
16	1 2 3 4 5 6 7 8 9 10 11	20 21 22 23 24 25 26 27 28 29 30	31 32 33 34 35 36 37 38 39 40 41	50 51 52 53 54 55 56 57 58 59 60																																																								
18	1 2 3 4 5 6 7 8 9 10 11	21 22 23 24 25 26 27 28 29 30	31 32 33 34 35 36 37 38 39 40 41	51 52 53 54 55 56 57 58 59 60																																																								
20	1 2 3 4 5 6 7 8 9 10	21 22 23 24 25 26 27 28 29 30	31 32 33 34 35 36 37 38 39 40	51 52 53 54 55 56 57 58 59 60																																																								
22	1 2 3 4 5 6 7 8 9 10	22 23 24 25 26 27 28 29 30	31 32 33 34 35 36 37 38 39 40	52 53 54 55 56 57 58 59 60																																																								
24	1 2 3 4 5 6 7 8 9	22 23 24 25 26 27 28 29 30	31 32 33 34 35 36 37 38 39	52 53 54 55 56 57 58 59 60																																																								
26	1 2 3 4 5 6 7 8 9	23 24 25 26 27 28 29 30	31 32 33 34 35 36 37 38 39	53 54 55 56 57 58 59 60																																																								
28	1 2 3 4 5 6 7 8	23 24 25 26 27 28 29 30	31 32 33 34 35 36 37 38	53 54 55 56 57 58 59 60																																																								
30	1 2 3 4 5 6 7 8	24 25 26 27 28 29 30	31 32 33 34 35 36 37 38	54 55 56 57 58 59 60																																																								
32	1 2 3 4 5 6 7	24 25 26 27 28 29 30	31 32 33 34 35 36 37	54 55 56 57 58 59 60																																																								
34	1 2 3 4 5 6 7	25 26 27 28 29 30	31 32 33 34 35 36 37	55 56 57 58 59 60																																																								
36	1 2 3 4 5 6	25 26 27 28 29 30	31 32 33 34 35 36	55 56 57 58 59 60																																																								
38	1 2 3 4 5 6	26 27 28 29 30	31 32 33 34 35 36	56 57 58 59 60																																																								
40	1 2 3 4 5	26 27 28 29 30	31 32 33 34 35	56 57 58 59 60																																																								
42	1 2 3 4 5	27 28 29 30	31 32 33 34 35	57 58 59 60																																																								
44	1 2 3 4	27 28 29 30	31 32 33 34	57 58 59 60																																																								
46	1 2 3 4	28 29 30	31 32 33 34	58 59 60																																																								
48	1 2 3	28 29 30	31 32 33	58 59 60																																																								
50	1 2 3	29 30	31 32 33	59 60																																																								
52	1 2	29 30	31 32	59 60																																																								
54	1 2	30 60	31 32																																																									
56	1	30 60	31																																																									
58	1		31																																																									
60																																																												

FRC connector-fitted wiring

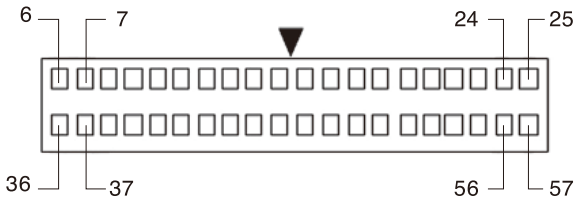
■CCBB-040T-pin number-FRC (10 ~ 60pins)

10 ~ 32 pins



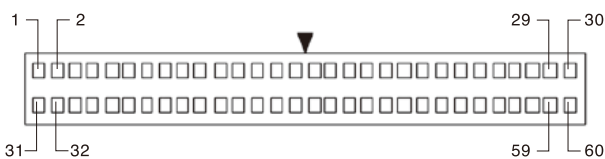
CCBB-040-pin number-FRC (32pins FRC connector Type)											
CCBB-040T-pin number-FRC (32pins FRC connector Type)											
contact pins	Unused probe solder pad No.and Connector-pin No.										
10pins	8 38	9 39	10 40	11 41	12 42	13 43	19 49	20 50	21 51	22 52	23 53
12	8 38	9 39	10 40	11 41	12 42		19 49	20 50	21 51	22 52	23 53
14	8 38	9 39	10 40	11 41	12 42			20 50	21 51	22 52	23 53
16	8 38	9 39	10 40	11 41				20 50	21 51	22 52	23 53
18	8 38	9 39	10 40	11 41					21 51	22 52	23 53
20	8 38	9 39	10 40						21 51	22 52	23 53
22	8 38	9 39	10 40							22 52	23 53
24	8 38	9 39								22 52	23 53
26	8 38	9 39									23 53
28	8 38										23 53
30	8 38										
32											

34 ~ 40 pins



CCBB-040-pin number-FRC (40pins FRC connector Type)										
CCBB-040T-pin number-FRC (40pins FRC connector Type)										
contact pins	Unused probe solder pad No.and Connector-pin No.									
34pins	6 36	7 37								25 55
36	6 36									25 55
38	6 36									
40										

42 ~ 60 pins



CCBB-040-pin number-FRC (60pins FRC connector Type)											
CCBB-040T-pin number-FRC (60pins FRC connector Type)											
contact pins	Unused probe solder pad No.and Connector-pin No.										
42pins	1 31	2 32	3 33	4 34	5 35			27 57	28 58	29 59	30 60
44	1 31	2 32	3 33	4 34				27 57	28 58	29 59	30 60
46	1 31	2 32	3 33	4 34					28 58	29 59	30 60
48	1 31	2 32	3 33						28 58	29 59	30 60
50	1 31	2 32	3 33							29 59	30 60
52	1 31	2 32								29 59	30 60
54	1 31	2 32									30 60
56	1 31										30 60
58	1 31										
60											

When using this product with fixing on the stand, etc.

● Connected to the front type

- Remove the E ring on the hinge shaft A, and pull out the hinge shaft A. Remove whole set except the pin block, and fix the base block on the stand with the M3 plate screws.

● Advice of the positioning pin

The base, holding board, and wiring cover have holes for the positioning pins. It is recommended to use a positioning pin when assembly/disassembly to a stand is repeatedly done.

